



怡輝建築有限公司

Yee Fai Construction Company Ltd.

TENDER BOOKLET
(TECHNICAL SUBMISSION)

MAIN CONTRACT WORKS
FOR
COMMERCIAL DEVELOPMENT
AT
KTIL240, 98 HOW MING STREET
KOWLOON, HONG KONG

KTIL240



FOR

KT REAL ESTATE LIMITED

AND

TURBO RESULT LIMITED



International Commerce Centre and
Elements Shopping Arcade



International Finance Centre, IFC Mall and
Four Seasons Hotel



APM (Millennium City 5)

YF 怡輝建築有限公司 **Yee Fai Construction Company Ltd.**

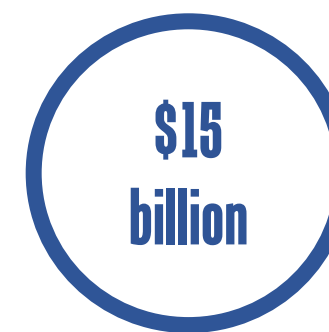
Yee Fai is a wholly-owned subsidiary of Sanfield (Management) Limited. Operating in Hong Kong building construction sector since 1974, we focus on our customers' needs with our capabilities and resources to bring extra values through our innovative and sustainable solutions. Our core values are "Building Homes with Heart" and "Safety, Quality, Speed and Efficiency".

Project

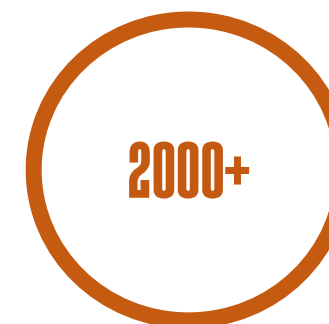
Main Contract Works for the Proposed Commercial Development at **KTIL 240**, How Ming Street, Kwun Tong.

Tenderer

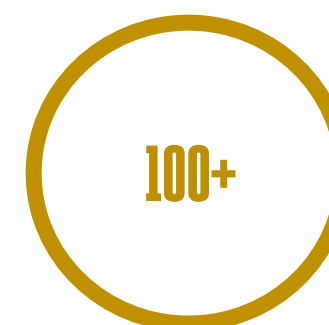
Yee Fai has a long-standing reputation for delivering high quality products in Hong Kong and Mainland China. We create unique values to our customers from a wide spectrum of projects over the years, including sophisticated data centers; grade-A offices; high-end commercial retails; shopping arcades and prestigious residences. With an annual turnover of HKD\$15 Billion, **Yee Fai** employs over 2,000 staff across various construction professionals, including Civil and Structural Engineers, MEP Engineers and Building Engineers, composing a technically-strong team. This puts us in a unique position to provide full-fledged one-stop solution services to our customers throughout all construction-related businesses. This uniqueness is particularly vital for projects with great technical challenges where design and construction are required to be highly harmonized



Annual turnover



Construction skilled craftsman



Professional Engineers



Local presence

Yee Fai's Unique Advantages

Yee Fai shares the **same values** as the Client “Building Homes with Hearts” and “Quality, Speed, Efficiency”. We are familiar with the corporate culture of the Client, enabling a seamless connectivity across all project stakeholders right from the start. Our 40+ year local presence makes us established strong technical know-how and practical knowledges in Hong Kong construction industry. The **strong local supply chain networks** of various construction materials and external specialist contracting associates allows not only to reduce costs, but also enable us to swiftly respond to any changes of the Client's requirements.

2

Strong Design Capabilities for Method-led Design

Yee Fai's Project Organization comprises 3 Registered Structural Engineers (RSE). They all have a wealth of experience in deep basement within extremely difficult urban environment and heavy-duty structural steelworks in super high-rise buildings. Not only do the 3 RSEs familiarize the design skills and its building authority approvals, but they possess a vast firsthand experience of technical know-how and construction practices. In conjunction with our consultant partners such as WPS Hong Kong Limited and Fugro Geotechnical Services Limited, Yee Fai is able to integrate the design and build processes, and streamlines every step of these processes to deliver solutions to the best interest of KTIL240 with a “**Method-led Design**” approach..

1

Strong local supply chain

Orientfunds Construction Materials Ltd.

Supply of Precast Concrete

Glorious Concrete (HK) Ltd.

Supply of concrete

Sanfield Landscape Co., Ltd.

Soft Landscaping and transplanting

Sanko Construction Co., Ltd.

Supply and Installation of Timber Door

3

Long term Partnership with KMB

KMB and **Yee Fai** have had built up a faithful long-term partnership since 90s'. Successful building masterpieces are of excellent quality with appreciation and transforming the Ex-depots into Hong Kong's premier advanced technology and commercial developments.

Aegis Engineering Co., Ltd.
Site Plant and Machinery Consultant Services

WSP Hong Kong Ltd.

Fugro Geotechnical Services Ltd.

Geotechnical Consultant Services

Consultancy Services

Specialist Partners

Goldwave Steel Structure Engineering Ltd.

Temporary Steel Structure

China Wealth Hong Kong Machine Ltd.

Concrete Pumping Machine

Freyssinet Hong Kong Ltd.

Post-Tensioning

Building Services Installation Sub-contractors

Lik Kai Engineering Co., Ltd.

MVAC Installation

Eversun Engineering Co., Ltd.

Temporary Site Electrical Installation

Everfield Engineering Co., Ltd.

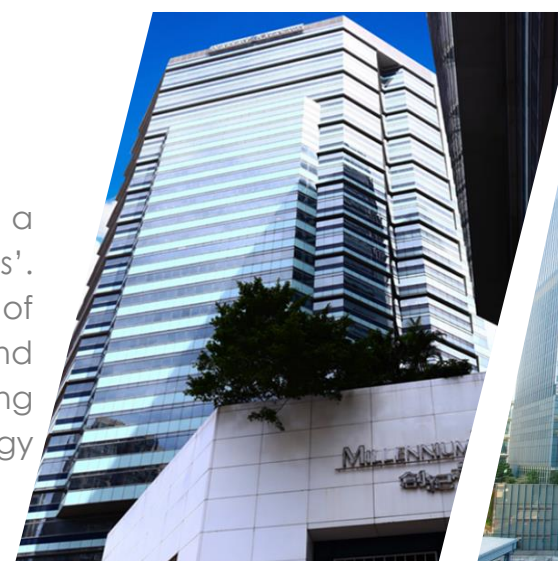
Fire Services and Electrical Installation

Special Partners

Safety Auditor

Y Safety Clinic Co., Ltd.

Safety Auditing Services



Millennium City 1
(Ex- KMB Kwun Tong Depot)
Completed in 1998



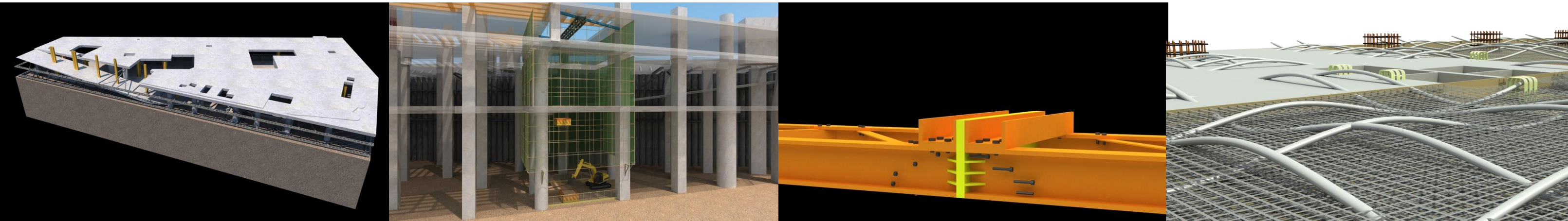
Kowloon Commerce Centre
(Ex- KMB Kwai Chung Depot)
Completed in 2008 and 2012



Manhattan Hill
(Ex- KMB Lai Chi Kok Depot)
Completed in 2007

Table of Contents

Contents



Unique Advantages of Yee Fai	I
------------------------------	---

Chapter 1

Project Overview

1. Project Background	1
1.1. Site Characteristics	3
1.2. Project Specifics	4
1.3. Geological Characteristics	6
1.4. Time Obligations	7
2. Construction Strategy And Work Scope	9
2.1. Strategic Construction Planning	9
2.2. Site Constraints and Solutions	11
2.3. Scope of Works	13
3. Mission And Vision	23

Chapter 2

Construction Methodology

1. Executive Summary	27
2. Yee Fai Alternative Top-Down Construction	28
2.1.Yee Fai's Alternative ELS Design	28
2.2.G/F Construction	29
2.3.Basement	32
2.4.Towers	39
3. Site Layout And Major Traffic Route	46
3.1.Site Logistic	46
3.2.Phasing Arrangement	49
3.3.Tower Cranes Arrangement	51
3.4.Office Towers Structure Construction Stage	52
3.5.Site Logistics Planning For External Façade, ABWF And M&E Installation Stage	53
3.6.Strategic Planning For Special Construction Methodology	54

4. Footbridge Erection	55
5. Casting Concrete Arrangement	57
6. Façade Management	58
6.1.Partnering with NDSC	59
6.2.Planning	60
6.3.Operation	66
7. Transformer Room Arrangement	70
8. M&E Installation	70
8.1.DfMA (Design for Manufacture and Assembly)	70
8.2.M&E Packaging Contract	70
9. Protection Methods To The Completed Finishing Works	71

Chapter 3

Master Programme

1. Key Milestones	74
1.1. Major M&E Handover Dates	76
2. Long-Lead Items	77
3. Statutory Inspections	79



Chapter 4

Project Management

1. Executive Summary	82
2. Project Management Organization Chart	83
2.1. Project Organization Chart	83
2.2. Executive Committee	84
2.3. Key Site Management Staff	85
2.4. Site Organization Chart	86
2.5. Off-Site Management	87
3. Construction Machinery And Equipment Management	90
3.1. Plant List	90
3.2. Plant Team Management Flow Chart	91
3.3. Tower Crane	92
3.4. Material Hoist	102
3.5. Passenger Hoist -	103
3.6. Mobile Crane	103
3.7. The Muck Hoist	104
3.8. Truck Mounted Crane	106

3.9. Lifting Supervision Management System	108
3.10. QR Code	108
4. Health And Safety Management	109
4.1. Safety Policy and Plan, 3-Year Safety Records, Safety Promotion, Safety Organization Structure	109
4.2. Hazard Identification and Solution	139
4.3. Firefighting and Control	141
4.4. Housekeeping	143
4.5. Accident Reporting	147
4.6. Security Plan	149
4.7. Emergency Plan	150
4.8. Health Station	153
4.9. Smart Dashboard	153
5. Environmental Related Management	155
5.1. LEED/BEAM Plus Implementation	155
5.2. PR Plan / Chronologic	159

Tunnel	
5.3. Environmental Management Plan	165
5.4. Waste Management Plan	165
6. Inspection And Quality Control	166
6.1. Scaffolding	166
6.2. Setting Out	170
6.3. Subcontractor Review	172
6.4. Knowledge Base	172
6.5. Construction Quality Management System	173
7. Building Information Modeling (BIM)	175
7.1. Introduction	175
7.2. Project Team and Planning	177
7.3. BIM Infrastructure	178
7.4. Drawing Production Strategy	178
7.5. Model-Based Coordination	178

7.6. Model-Based Quantity Take-Off And Cost Estimating	179
7.7. Record Modeling	180
7.8. BIM Applications and Solutions	181
7.9. BIM Project Experience	183
8. Off-Site Arrangement	187
8.1. Table System Formwork	187
8.2. Cut and Bend	187
8.3. Footbridge	187
9. Temporary Works Management	188
9.1. Structural	188
9.2. MVAC –Basement Condition And Ventilation	190
9.3. Fire Services System	192
9.4. Plumbing and Drainage System	192
9.5. Electrical System	193
10. Handover Control and Maintenance	194

Job Reference	198
Annex	206